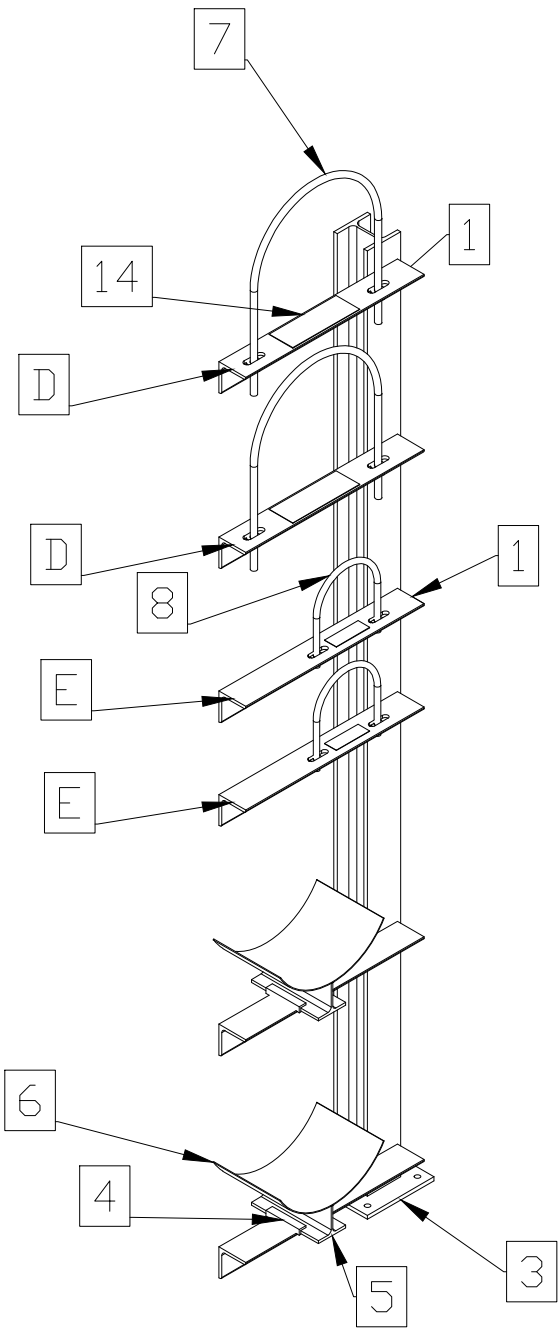
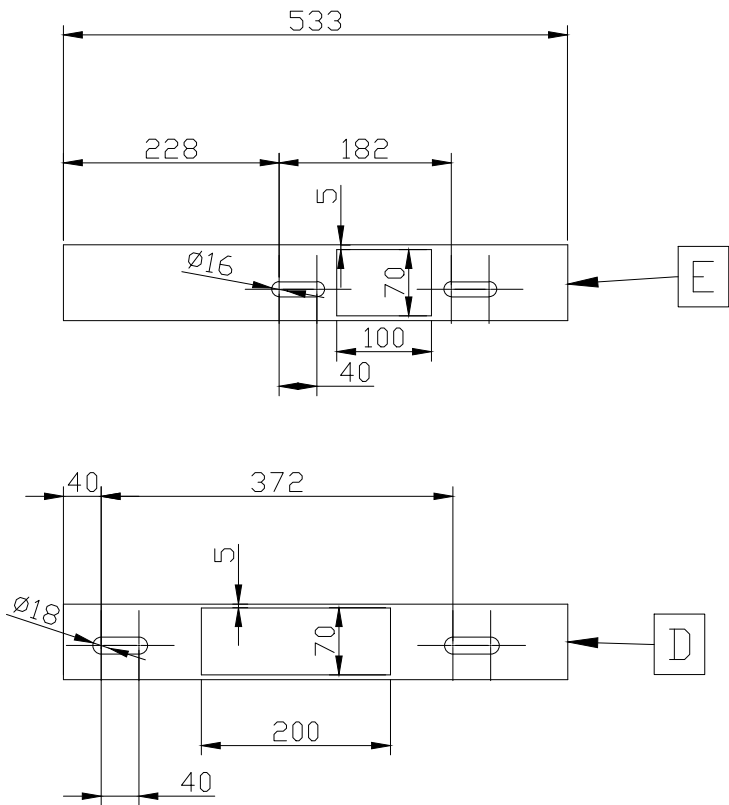
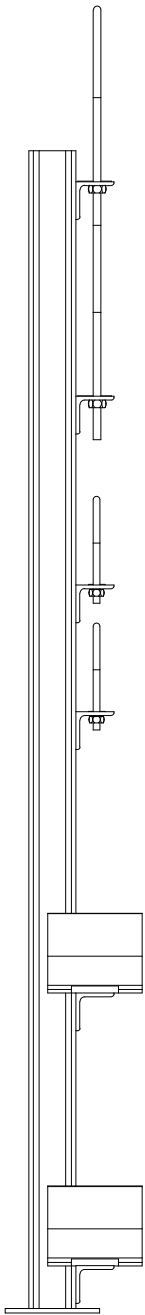
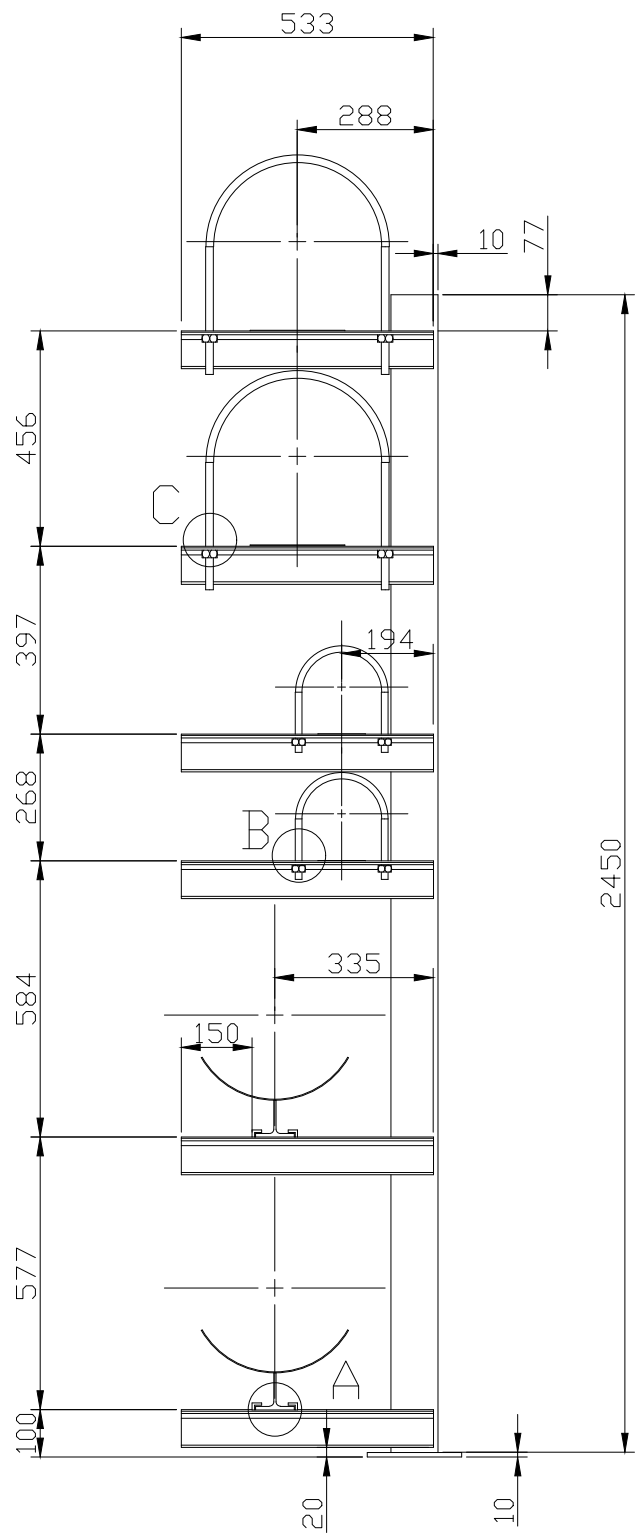


Balloon
Pos.
Qty.



BILL OF MATERIALS			
ID	QT (Ud/M)	DESCRIPTION	MATERIAL
1	3.198	L 80x80x8	S235JR
2	2.45	HEB 100	S235JR
3	0.4	S235JR PLATE 200x200x10	S235JR
4	0.4	S235JR L PLATE 15x20x5	S235JR
5	0.4	IPE 160	S235JR
6	0.4	AISI316L PLATE L=375mm (Thickness 2mm)	S235JR
7	2	U-BOLT DN350 M16 DIN 3570 WITH PLASTIC COVER	STEEL
8	2	U-BOLT DN150 M14 DIN 3570 with plastic cover	STEEL
9	4	NUT M16 8 DIN934	8
10	4	FLAT WASHER M16 St DIN125	St
11	4	NUT M14 8 DIN934	8
12	4	FLAT WASHER M14 St DIN125	St
13	4	ANCHOR BOLT M12x120 8.8	8.8
14	2	AISI316L PLATE 200x70x1	AISI 316L
15	2	AISI316L PLATE 100x70x1	AISI 316L

QTY: 1 UNIT

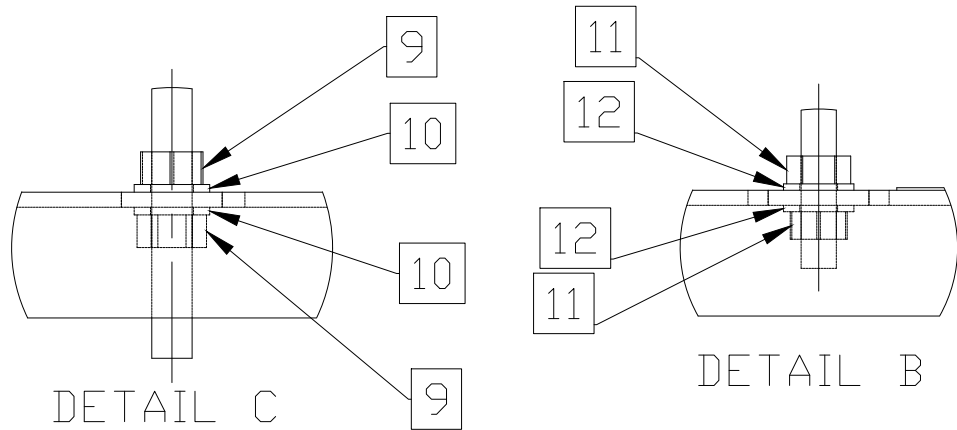
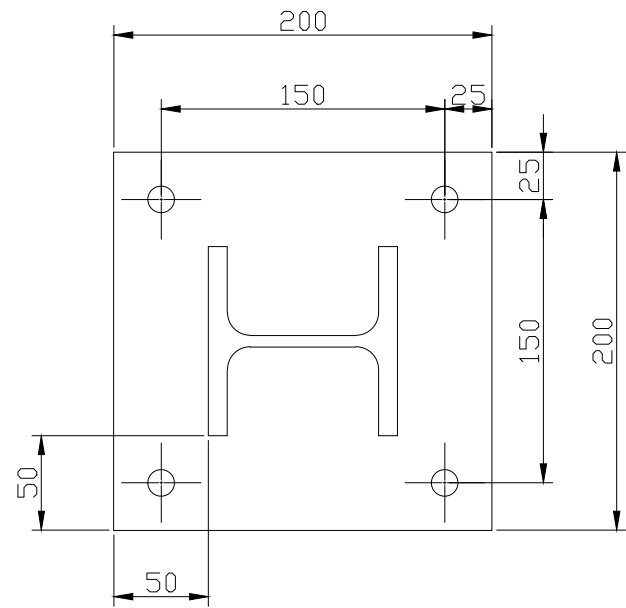
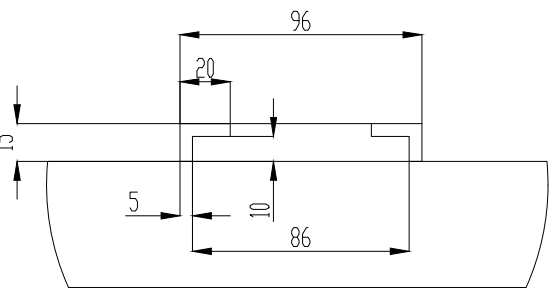
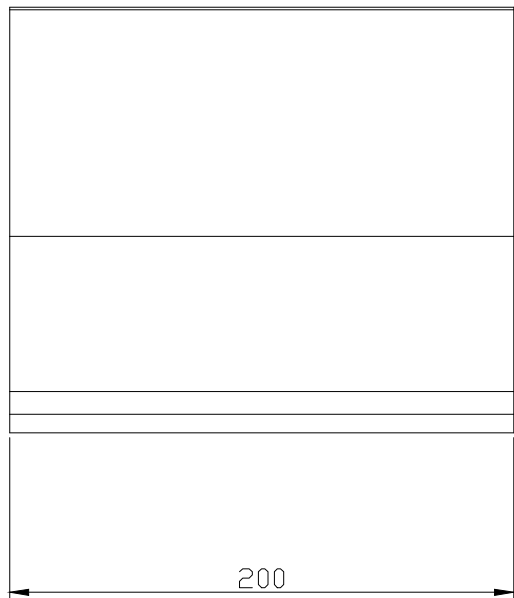
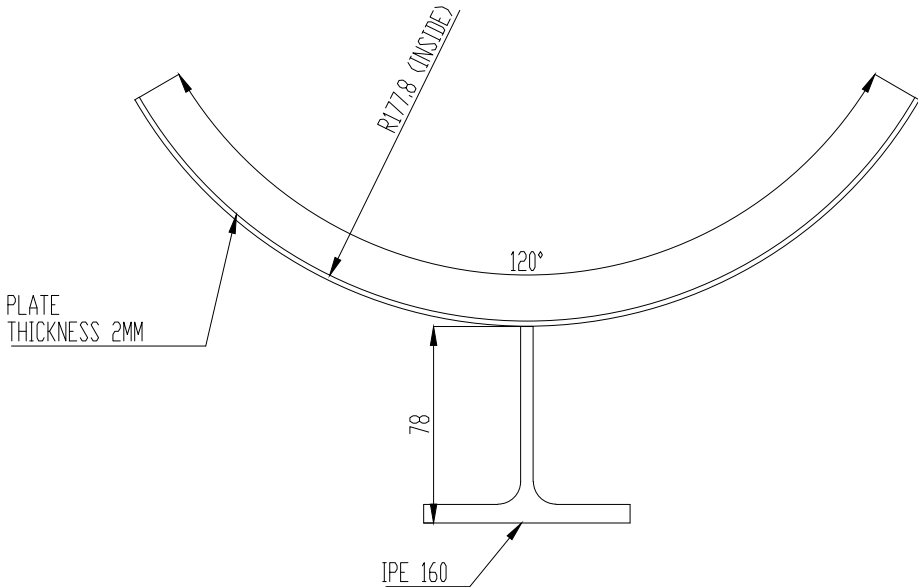


PLATE 3



DETAIL A



UNSPECIFIED WELDS:			
JOINT WITHOUT BEVEL	JOINT WITH BEVEL	70% 70% 50-100 50-100	REINFORCEMENT JOINT
40% 40%	40% 40%	40% 40%	40% 40%
Note: Percentage (%) of the weld in relation to the smallest section of the weld joint.			
Non-individual tolerances according to DIN 7168.		Drawn 3D:	
		Drawn 2D:	
		Date: 1/12/2025	
		N° Drawing: 2558-331X-TMT-ESR10-SUP11	
Oxygen Route		Scale 1:40	
TMT (FVRB-2,7-25)		Weight (kg)	
		Sheet 1 of 1	
		Format A2	



1st Dihedral



This drawing belongs to IFI Industrial Furnaces INSERTEC and must not be used or reproduced without authorization.

Before manufacturing this part, carefully review the drawing and clarify all doubts.